

# An introduction to GIS for conservation managers

9th - 13th April 2012

## Who is the course for?

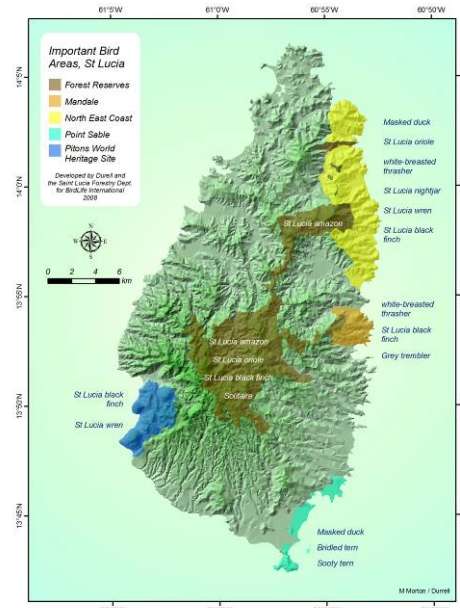
The course is designed for researchers, resource managers and conservation practitioners who require practical understanding of GIS, and its role in species and habitat recovery.

## Who is running the course?

The course is led by Dr Mark O'Connell, Director of Ecological Research & Training, in association with ITC staff. It will be based at the International Training Centre (ITC) at Durrell's headquarters on the island of Jersey, Channel Islands.

## What will I learn from the course?

Most of the great issues confronting modern conservation have a spatial element. Geographic Information System (GIS) is a computing tool that provides high utility data to underpin conservation action, allowing information about species, habitats and landscapes to be described, analysed, and graphically represented.



At the end of the course participants will:

- Understand the principles of representing the real world in two dimensions
- Experience how raw data are entered into a GIS (including using a GPS)
- Know the key basic GIS operations, and experience how features are linked to quantitative and qualitative attributes
- Be familiar with GIS spatial analyses and modelling
- Understand how GIS data are used to underpin actions in their particular part of the conservation sector
- Realise the time and resource issues associated with GIS

## How much will it cost?

The course fee is £700 (discounted to £560 if booked and paid at least 8 weeks in advance). Full board on-site accommodation is available for a further £210 for six nights.

For further information please contact: +44 (0)1534 860037 or [itc@durrell.org](mailto:itc@durrell.org)

Spatial shifts in the main sub-pop of the globally endangered white-breasted thrasher 2006-10

